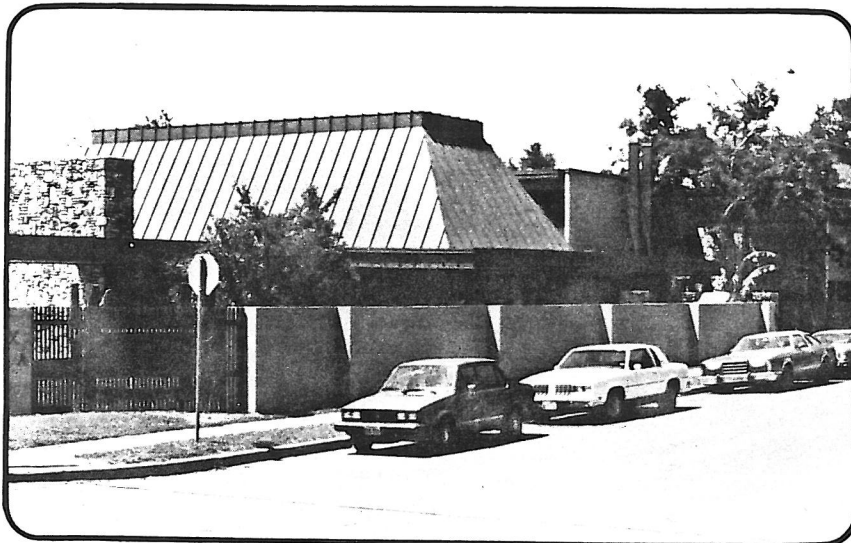


ΛΧΑ LAMBDA CHI ALPHA



Nickname: Lambda Chi
Founded: 1909; Boston College
Local Founding: 1917
Address: 2400 Pearl

The Lambda Chi Alpha house, located at 24th and Pearl, is one of the largest and best equipped houses of its kind. The newly renovated two million dollar facility features a swimming pool, athletic sportcourt, large sunken party room and apartment living accommodations.

Fall provides a busy social calendar, beginning with parties after every home game, mixers and our lavish White Rose Formal. During the spring, UT's Round-Up is traditionally kicked off with our annual Street Party and we finish the week with our New Orleans semi-formal. The Casino Formal and our infamous "Luau" bash climax the spring semester. Additionally, we raise money for charities with the help of top sororities, and compete in all of the intramural sports, finishing in the top five in the overall fraternity competition.

Lambda Chis place strong emphasis on scholastics and involvement in campus activities.

Our members receive academic honors such as Phi Eta Sigma, Deans List, Omicron Delta Kappa, Mortar Board, Goodfellows, Outstanding Students and Who's Who in American Colleges. Around campus, we participate in Student Government, IFC, Posse, Texas Relays Committee, Longhorn Band, Longhorn Singers, UT Varsity track and soccer and many other organizations. Lambda Chis currently serve as a Senator in Student Government, Vice President of the Interfraternity Council and President of Omicron Delta Kappa, one of UT's most prestigious honor societies.

New members are helped to adjust to university life through our Big Brother program and through interaction with our Little Sisters. Emphasis is placed on working together on projects, improving leadership abilities and good study habits, and learning true brotherhood.

THE ASSOCIATE MANUAL



AXA

ALPHA MU ZETA
UNIVERSITY OF TEXAS

ASSOCIATE MEMBERS OF LAMBDA CHI ALPHA

It is the desire of every member to develop the strong men that this chapter of Lambda Chi Alpha is noted for. Each and every member is extremely proud of this chapter and is equally interested in fostering such pride in its Associates. The Associate Members are the backbone of the fraternity; therefore it is the utmost importance that you all be well trained. It follows that all Associate Members be subject to close scrutiny. If the members feel that an Associate Member is incompatible with this chapter, they have the right to dismiss him from Associate Membership.

We earnestly hope that through our guidance we can be of assistance to each and every Associate Member. We ask nothing that a man cannot do or should not do. Everything is done with the primary goal in mind of developing responsibility and manhood. The goal of this program is to instill in the student an important and necessary part of his education here at the University of Texas.

The motto on the bottom of our coat of arms is "Vir Quisoué Vir", translated it means "Every Man a Man". It is upon this foundation that we base our Associate Membership Training Program. It is through this motto that we have built and will continue to build the outstanding reputation of Lambda Chi Alpha.

--- The Initiated Brothers
of Lambda Chi Alpha

A MESSAGE FROM THE HIGH KAPPA

Welcome to Lambda Chi! I hope all of you are as fired up about this semester as I am. We are going to experience great times during your membership. As High Kappa, it is my duty to teach you about our chapter, national organization, and other functions concerning Lambda Chi Alpha. Also, I will help you with any problems you may encounter.

I want all of you to feel at home. I say this because some of you may feel that because you are not yet a full-fledged member, you are alienated or inferior. Rest assured that the Initiated Brothers have the utmost respect for you and enthusiastically invite you to join you in all activities. In turn, we demand equal respect from you and at all times be thoughtful of your actions as an Associate Member. I trust that you will consider well what I have pointed out. Remember, I will always be at your disposal for anything you wish to discuss.

Good luck on this new challenge. I am confident that you will do well in your future endeavors which will spur you on to increasing usefulness.

- T M - H.K.

THE ASSOCIATE PROGRAM

The day has passed when we let college administrators, similiar organizations and society tell us that we must subject our new members to a period called pledgeship. An individual's time is too important to be wasted with a period of second-class citizenship when he is in an organization with as much potential for human growth as the Lambda Chi Alpha Fraternity.

Lambda Chi Alpha has long rid itself of the oldfashioned pledge training and hazing syndrome of the 1950's. The days of janitorial apprenticeships, pledgeship cliques, dual standards of conduct, pseudo-social status, and unearned pride are hopefully gone forever. We will admit that our growth and stability have been unexcelled in the educational world.

No other collegiate organizations have ever amassed the millions of members that the college fraternity system enjoys. The fact is that our system is older than most colleges and universities themselves. Along with the negative connotations, we have obviously been making some genuine contributions in order to grow at the rate we have grown.

In addition to doing away with the term pledge and his status in general, we have developed a new program for promoting the growth of an individual. In this program we have tried to stress the traditional values of our Fraternity: Friendship, small-group living-learning atmosphere, a sense of belonging, individual growth, and worthwhile human experiences. We offer a comprehensive orientation to our Fraternity and its programs, leadership development, a beautiful and inspiring ritualistic

experience, and a continuing human development program as a fraternity member.

Prior to the ritual, an individual is known as an Associate Member. This is the period of time when his fraternity education is most intensified. Instead of being isolated into a separate class, however, he is brought fully into the realm of active membership; attending chapter meetings, voting, committee membership, and generally helping run the organization.

This program is designed to overcome one of the major flaws of the entire pledge concept. An Associate Member is an individual with God-given talents and aspirations. He is a product of his former environment. We want to help that man continue to grow within his own framework. He will not be exactly like his fellow Associates. They come from different backgrounds, and may be at different levels of maturity and education. Therefore, they cannot be herded together as a pledge class.

The pledge program assumes that every man's needs are the same. Our new Associate Program gives every man credit for what he is while helping him grow as an individual.

CONGRATULATIONS AND WELCOME TO LAMBDA CHI!

The Associate Social Program is divided into three major categories:

- 1) With Sororities
- 2) With other Frats
- 3) With the Active Chapter

1) With Sororities

The goal of this is to educate each Associate in the social graces. No member of any Fraternity was born with these skills. Through constant exposure and interaction with sororities, each Associate will develop these skills, and hopefully, have a good time doing it.

ACTIVITIES

- Mixers with sororities
- Sorority pledge class kidnaps
- Serving dinner at sorority houses
- Philantropies
- Fund raisers
- LXA-DDD street party

2) With Frats

Gaining respect with your peers is also important. Friendly competition in a social atmosphere will allow you to make close friends in other frats.

ACTIVITIES

- Phi-Delt Mudfest
- Round-Up Carnival/Parade
- Sigma Chi Fight Night

3) With the Active Chapter

To foster the feeling of Brotherhood, participation with the Active Chapter is imperative. With the right attitude and atmosphere doing even the least meaningful activity creates a strong feeling of brotherhood.

ACTIVITIES

- Jigger-minute
- Serenades
- Black brick/Green coat
- ~~Kappa Sig sling shot war~~
- Fireball



Lambda Chi Alpha

Alpha Mu Zeta
University of Texas

2400 Pearl
Austin, Texas 78705

BROTHER BYNUM'S CHOPPER MANUAL

HYMN NUMBER 1

She was a virgin in her freshman year,
She was a virgin with her conscience clear,
She didn't smoke or drink or sleep with guys,
She was the envy of the _____ you can bet,
Until she met a dear old Lambda Chi
Who took away all her virginity
Now she's a dirty whore in gay Pari
And the mother of an SAE,
The dirty bastard's, the mother of an SAE.
Half the world is White and free, the other half is SAE.
They're not like the others,
They sleep with their brothers,
Oh why did I pledge SAE?

HYMN NUMBER 2

Down in Duncan Tennessee
There's a boot black who was me
And my father shoveled horseshit all day long
Then one day when work was done
He found a diamond in the dung
And he sent me off to this fraternity.

So Damn Damn Damn the Kappa Alphas
To Hell with the boys from SAE
(flip off SAE)
Damn the Phi Delts and the rest
For we know we are the best.

We're the drunken Sons of Bitches from Lambda Chi !!!

So Hail Hail you worthy Brothers
Lift your thunder mugs so high
And we'll drink another glass
To the biggest Horses Ass
Who ever pledged this fraternity.

HYMN NUMBER 3

A fellow came down to ol' UT, he thought he'd join a frat,
He thought he'd take a look around and see where he was at,
And just because he was the best the town had ere' behold,
Oh, the colors that he wore that night were purple, green, and gold.

(Chorus) Oh, he rambled, he rambled, he rambled all around,
in and out of town, oh he rambled, he rambled, he rambled 'til
he put the colors on. --BOOM! BOOM!

He rambled down to Hadies to see the poor old souls, the PiKA's, the Sigma Chis
were roasting on the coals, the Sigma Nu's the Sig Ep's,
the sizzle had begun, while Lambda Chi's on velvet seats
were watching all the fun.

(Chorus)

The Kappa Sig's were all passed out and placed upon the shelf,
An in came old Bealzebub, the king of Hell himself,
He gave the boys the ol' time grip, he didn't dare do nye,
for he was a Charter member and a damn good Lambda Chi.

(Chorus)

^{SSE}
He rambled up to Heaven to the fellows there, He found the gang
all gathered around the Golden Chair, And some were smoking
cigarettes and some were shooting dice for they were all
good fellows for they were Lambda Chis.

(Chorus)

Now many a Lambda Chi Alpha man has wandered far and wide,
his path illuminated by his Crescent set so high.
We'll sing hurrah for Lambda Chi, we'll sing it 'til we die.
We'll sing hurrah for Lambda Chi in Heaven bye-'n-bye.

(Chorus sung softly with shouted Boom Boom)

HYMN NUMBER 4

Well I'm a Lambda Chi and a hella of a guy and I don't give a damn,
I came to school to break the rule and flunk the damned exam-
To hell, to hell with studying, To hell, to hell with school,
And if you're not a Lambda Chi, To hell, to hell with you-
To hell with you-- (echo) To hell with you,
And if you're not a Lambda Chi, To hell, to hell with you!

Oh Adam was the first man, to ever wear our pin,
And Soloman was the wisest, we ever did let in,
And Sampson was the strongest, although he had a twitch,
And if Caesar were alive today, we'd pledge the Son of a Bitch.
So raise your golden goblets, up to the sky,
And if you're a damned good Lambda, you'll drink it dry and dry!

SO...

Drink, drink, drink, drink, Drunk, drunk, drunk, drunk,
Drunk last night, I was drunk the night before
And I'm gonna get drunk like I've never been drunk before,
For when I am drunk I'm as happy as can be
For I am a member of the Souse family
Oh, the Souse family is the best family,
That ever came over from Old Germany,
There's the High land Dutch and the Low land Dutch,
And the Rotter Dam Dutch, and the Goddamn Dutch.

Sining Glorious, glorious--One keg of beer for the four of us,
Singing glory be to God, that there are no more of us,
For one of us could drink it all alone,
More beer, idamn beer, over here--HEY!

HYMN NUMBER 5

Bring out the old Golden Goblet, with the Lambda Chi on it,
and we'll all have another keg of beer-MORE BEER-
For we all came to college but we did not come for knowledge
so we'll raise hell while we're here.

(chorus) Oh Lambda Chi, Chi, dear old Lambda Chi,
It's the one Fraternity-FRATERNITY-
Oh Lambda Chi, Chi, dear old Lambda Chi,
through all eternity!

Oh, we drank milk as freshmen, java as sophomores,
and as juniors we drank beer-MORE BEER-
But as seniors we drank liquor, because we find it so much quicker
and we have just one more year.

(Chorus)

HYMN NUMBER 6

Oh, there are no Chi Omegas at Purdue--AT PURDUE,
Oh, there are no Chi omegas at Purdue.
So the Beta Theta Pi's all sleep with Sigma Chi's
'cause there are no Chi Omega's at Purdue.

Oh, there are some Chi Omegas at UT -AT UT,
Oh, there are some Chi Omegas at UT
But the Beta Theta Pi's still prefer the Sigma Chi's,
While there are some Chi Omegas at UT.

Oh, there are no Lambda Chis down in Hell--DOWN IN HELL,
Oh, there are no Lambda Chis down in Hell.
For the place is filled with Betas, Sigma Chis, and pregnant Zetas,
While there are no Lambda Chis down in Hell. Hey!

HYMN NUMBER 7

High above the Pi Phi's garter, high above her knee,
Is the source of Pi Phi passion: her virginity.
Lift her skirts, oh lift them gently, lay her on the grass,
I would gladly give my life for just one piece of Pi Phi --Pie!

HYMN NUMBER 8

We'll all go down and Piss on Fiji House,
Piss on the Fiji House, Piss on the Fiji House.
We'll all go down and Piss on the Fiji House-Till it floats away-
Till it floats away,
Till it floats away-
We'll all go down and Piss on the Fiji House,
Till it floats away.

Phi Gamma Delta we are pissing on your lawn.
Phi Gamma Delta we are pissing on your lawn.
Phi Gamma Delta we are pissing on your lawn.
Come out and we'll piss on you!

s,

HYMN NUMBER 9

Mine eyes have seen the milkin' of the Oklahoma (Texas Aggie) cow,
Mine eyes have seen the squeelin' of the Oklahoma (Texas Aggie) sow,
So come on Texas boys we'll clean the Oklahoma (Texas Aggie) plow,
To hell with Okie U. (A&M)
To hell, to hell, to hell, to hell, to hell with Okie U. (A&M)
To hell, to hell, to hell, to hell, to hell with Okie U. (A&M)
To hell, to hell, to hell, to hell, to hell with Okie U. (A&M)
To hell with Oklahoma U. (Texas A&M)

HYMN NUMBER 10

Hullabaloo, caneck, caneck
Hullabaloo, caneck, caneck
We are the kiddies of the kiddie corps, All little Aggies ages two to four.
We play the soldier boy from morn' 'til night, we are the fellows
with the (high squeaky) real low fight!
The Eyes of Texas are upon you, that is the song they sing so well,
'high squeaky) makes me so mad I could spit!
, chigga-chigga ree
Chigga-chigga rum
Rum-tum-tum-tum everyone
I want my Mommy-I want my Mommy-I want my Mommy--NOW!

HYMN NUMBER 11

You stand her in the corner, You hold her tight like this-
You put your arms around her, and on her lips a kiss.
And if she starts to mummer, or if she starts to cry-
just tell her it's the sacred seal, of dear old Lambda Chi-HEY

We stood her in the corner, we held her tight like this
We put our arms around her, and on her lips a kiss.
She did not start to mummer, she did not start to cry,
So now we have a legacy, for dear old Lambda Chi-HEY!

HYMN NUMBER 12

Oh, the liquor was spilled on the barroom floor,
and the bar was closed for the night.
When out of his hole crept a little brown mouse and he sat in
the pale moonlight.

Oh, he lapped up the liquor from the barroom floor,
and back on his haunches he sat.
And all through the night you could hear him shout-
Bring on the Goddamned Cat.

HYMN NUMBER 13

On a cold winters evening the quests were all leaving,
O'Leary was closing the bar-When a gentleman dapper stepped out
of the phone booth (crapper), And these are the words that he said:

Her mother never told her the things a young girl should know
ut the ways of Lambda Chis and how they come and go--mostly go.
Now age has taken her beauty and sin has left its sad scar,
(shouted) good God Gertie what a gash!
So remember your brothers and sisters boys, and let her sleep
under the bar.

Beside Jack Daniels-
It's warmer there-
Sung by the whorehouse quartet-
Have you got a hard-on - not yet-
Are you gonna get one-you bet-

And there was Grandma, swinging on the outhouse door-
As if she owned it-
(shouted)--SHE DID!

HYMN NUMBER 14

Col. Roupers Troupers

We're Col. Roupers Troupers
We're raiders of the night
We're sorry sons of Bitches
Who'd rather fuck than fight.

We castrated the Colonel
With a broken piece of glass
Chop down the flagpole
And ram it up his idiotic god-o-mighty
Who the hell am I
You You You, You Dack
I'm a Lambda Chi, HEY!!

HYMN NUMBER 15

By The Light

*By the light - chorus -
of the flickering match - chorus -
I saw her snatch - chorus -
in the watermelon patch, oh yea

By the light - chorus -
of the flickering match - chorus -
I saw her gleam, I heard her scream

You are burning my snatch - chorus -

WITH THE GODDAMN MATCH!!!!

(*To be accompanied by a bizzare dance and a
snapping of your fingers)

Tell me son, what was the fee
to be in a frat, at big UT,
Whichever one you say, was best
they'll have you for, their next fine guest.
it was an easy choice to make
I'll tell you how the others rate.

The SAE's are full of shit,
They'd rather go for the male tit.
They drop their Levis very fast,
And play with the crap in their dirty ass.

Next I went to a big white house.
Inside it looked like a gism house.
Naked FIJIs everywhere
Grabbing each others pubic hair.

I came to a house with a lot of beer.
S&M had sure been here,
An ATO on the floor passed out
A Big fat dick hanging out his snout.

Then I came to this real stud place.
Grade A pussy was the case
A Chi Omega giving head,
A Pi Phi saying where's the bed.
A group of naked ADPis yelling
We want the daks of the Lambda Chis.

So... see its an easy choice to make,
I'll tell you again for your own sake,
I'd pledge only one or I'd rather die.
And now I'm a stud of the Lambda Chi!!!

HYMN NUMBER 17

We're all good brothers each one the others friend,
and we'll be good brothers until this world shall end,
So while we're together let's give a rousing cheer for
Lambda Chi Alpha, The one we hold so dear!

Let's give a hip hip hurrah for dear old Lambda Chi,
Let's give a hip hip hurrah and shout it to the sky,
We'll make the rafters ring when all the brothers sing about the
Cross and the Crescent it's the grandest thing.
We'll shout it loud and strong, We'll shout it all
Because we want the world to know
We stand together now
We stand to win and how
For dear old Lambda Chiiii. HEY!